

Pathways to Employment

Are you age 18-24 and not in education or employment, and/or you receive universal credit living in Copeland?

The Outdoor Partnership are offering courses of 16 days of **free** adventurous activity to boost your well-being, helping you on your journey to employment.

The day's activities will include:

- Indoor and Outdoor Rock Climbing
- Canoeing
- Stand up Paddleboarding
- Walking, and navigation
- Ghyll scramble

and much more

In addition, you will receive a 2-day outdoor first-aid certificate.

**15th
September -
15th
December
2022**

"This course has helped me to gain employment and I now feel more confident in developing myself towards a career".

Past Participant

Suitable for most abilities. If you're unsure, please contact the organiser

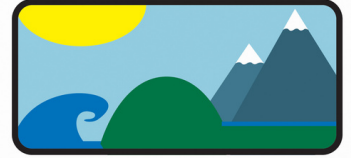
To book or for further information;

Stuart Dunnet - stuart@whyp.org.uk / 01946 690404

Or

claire.bryant@outdoorpartnership.co.uk / 07516507357

PARTNERIAETH AWYR-AGORED
Profiad • Mwynhau • Llwyddo



Experience • Enjoy • Achieve
OUTDOOR PARTNERSHIP

